



# Grow your practice with Realine.

Realine treatment is a straightforward, five-step virtually invisible aligner system — designed specifically to fix the minor orthodontic and cosmetic issues that you see every day.





# Who's right for Realine treatment?



## Minor orthodontic relapse

After ten weeks with Realine aligners, her teeth will be back in correct alignment.



## Small crowding issues

Following five sets of aligners, his crowding will be resolved — with little disruption to his daily routine.



## Gaps between front teeth

Each aligner moves her teeth by small increments, closing that gap without causing her discomfort.

Realine treatment is ideal for patients with minor crowding issues or very small gaps between their anterior teeth.

Minor cosmetic issues that you see everyday can become major issues over time. In just five sets of clear aligners, Realine can close gaps approximately 2mm wide and rotate a tooth by 10 degrees — giving your patients straighter, more confident smiles.

Before



After

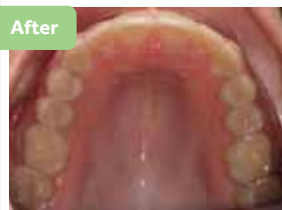


Spacing: Realine is able to treat minor Spacing issues. These images show diastima closure with Realine Treatment.

Before



After



Crowding: Realine Treatment is capable of treating minor Anterior Crowding/Rotation issues as illustrated.



# How does it work?

Providing Realine treatment is an easygoing, self-guided process that you manage and track on our web site.



**1 Purchase your Realine Starter Kit from Henry Schein Dental****2 Register your Realine Starter Kit and get set up**

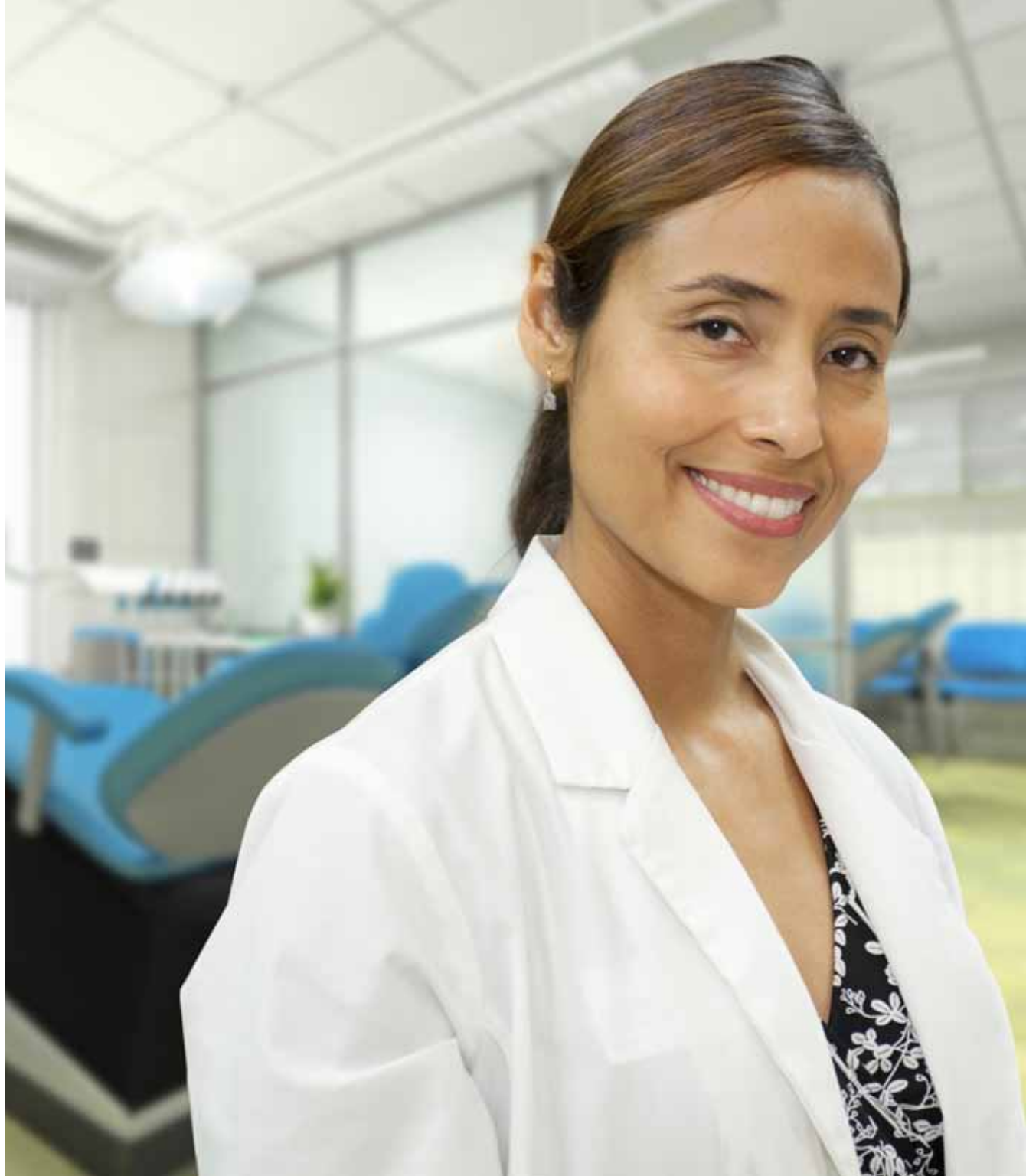
- Once you receive your kit, register at [realine.com](https://realine.com)
- Follow steps to set-up your account

**3 Collect your patients' records**

- Take and upload intra-oral photos
- Take PVS impressions and mail them
- Fill out the prescription form online with your treatment goal

**4 Review the Realine treatment plan**

- Realine will create a treatment plan based on your prescription
  - Simply approve the treatment plan
- Once you've approved the treatment plan, the aligners are custom-made and shipped right to your office.





# What can providing Realine treatment do for your practice?

## Expand your treatment options

Providing Realine can make good business sense for your dental practice. It's an innovative, cost-effective way to address your patients minor orthodontic and cosmetic concerns.

## Flexibility in billing

With a lab fee of \$575, you can bill in a way that works for you—whether that's through insurance or fee for service.

## More predictable results

Realine is engineered to deliver more predictable results at a price point your patients will appreciate.

## From the creators of Invisalign®

The Realine system is designed to be easy and effective. It's based on the same technology used to treat millions of patients from Align Technology, Inc. the creators of Invisalign.



Simply  
straighter  
teeth.™

# What's next?

There are three ways to order your Realine Starter Kit from Henry Schein Dental.

1

Contact your **Henry Schein Dental** Field Sales Consultant

2

Order online at  
**[www.henryscheindental.com](http://www.henryscheindental.com)**

3

Call Henry Schein Dental  
1-800-372-4346

**Item number (998-9996-AAT)**  
**Each \$574.99\***

For more information, go to [realine.com](http://realine.com)

\*price subject to change

*Distributed Exclusively By*  
 **HENRY SCHEIN®**  
DENTAL

To Order: 1-800-372-4346 8am-9pm (ET)  
To Fax: 1-800-732-7023 24 Hours  
[www.henryscheindental.com](http://www.henryscheindental.com)

 **realine™**  
Simply straighter teeth.™

Align Technology, Inc.  
2560 Orchard Parkway  
San Jose, California USA 95131  
[www.realine.com](http://www.realine.com)

20566 Rev A