



Exclusive  
Integration  
Coming Soon

CADENT

iTero™

Digital Impression System

## Increased Efficiency

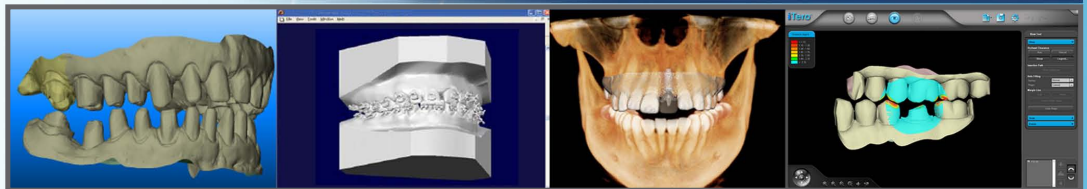
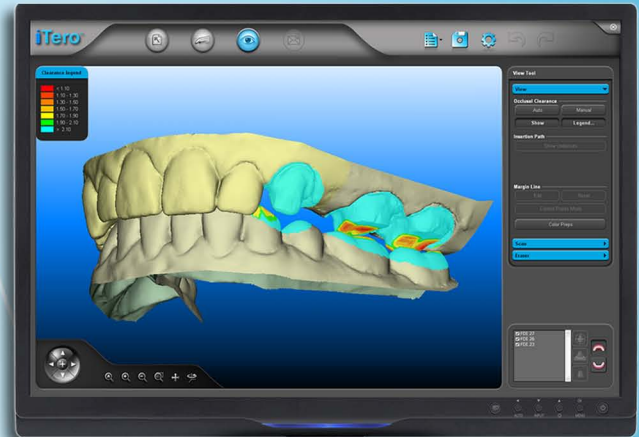
- Reduces prosthetic remakes to less than 0.5%
- Exceptional prosthetic fit significantly reduces seating time
- 1 Scanner services multiple doctors, operatories, and specialties with ease
- Virtually eliminate the cost and hassle of traditional impression materials

## Outstanding Ease-of-Use

- 100% Powder Free
- Contact scanning eliminates cumbersome hovering and complicated specific distance scanning
- Single operator use allows for easy staff delegation

## ONLY iTero Supports Comprehensive Full Function Dentistry

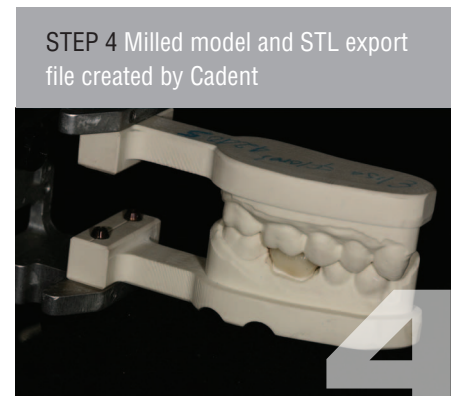
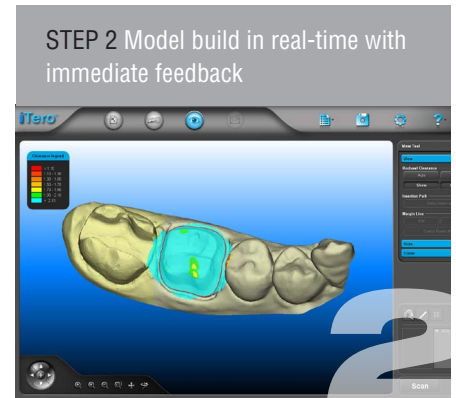
- Crown & Bridge
- Implants
- CBCT Integration
- Orthodontics
- Invisalign



For more information visit  
[www.cadentinc.com](http://www.cadentinc.com)

# iTero 4.0 Open Digital Workflow

- More than 600,000 iTero restorations processed
- iTero 4.0 Open digital workflow ensures seamless integration with:
  - Dental Laboratories
  - Laboratory Cad/Cam Systems
  - Implant solutions including Straumann®, Biomet 3i®, Glidewell® Implant Solutions and 5-Axis™ Dental
  - CBCT Integrations
  - EXCLUSIVE Invisalign Integration
- Patented parallel confocal imaging provides 100% powder free scanning
- Custom milled iTero models
- Use with all types of restorations and appliances including crowns, bridges, veneers, inlays/onlays, implants, surgical guides, retainers, and dental appliances



**0% FINANCING AND  
INVISALIGN PROMOTION  
AVAILABLE!!** Call your Invisalign Sales Representative Today.